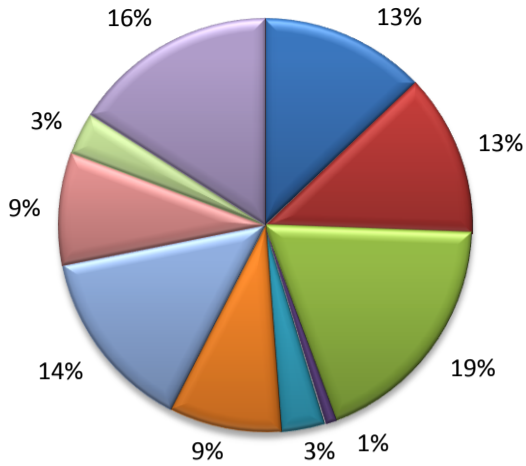


(Hardin, Jefferson, Orange)

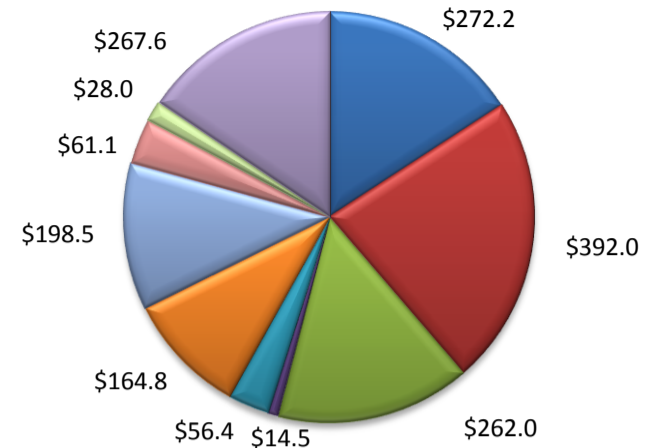
Industry Composition



- Mining, Logging, and Construction
- Manufacturing
- Trade, Transportation, and Utilities
- Information
- Financial Activities
- Professional and Business Services
- Education and Health Services
- Leisure and Hospitality
- Other Services
- Government

Wages by Industry (in millions)

2nd Quarter 2011



Employment by Industry

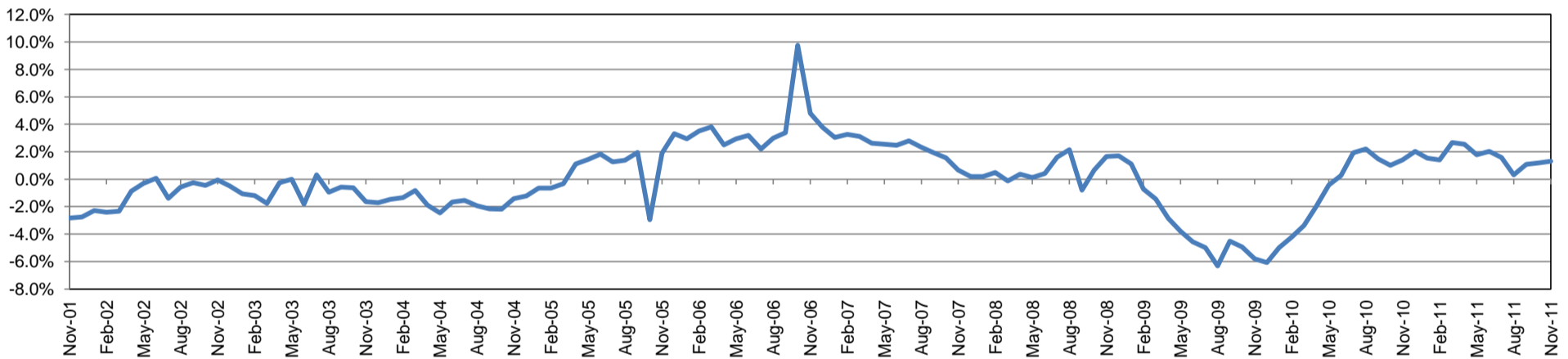
	Nov-11	Oct-11	Nov-10	Monthly Change		Annual Change	
				Actual	%	Actual	%
Total Nonfarm	161,900	161,100	159,800	800	0.5%	2,100	1.3%
Mining, Logging, and Construction	20,900	21,000	19,900	-100	-0.5%	1,000	5.0%
Manufacturing	20,500	20,400	19,800	100	0.5%	700	3.5%
Trade, Transportation, and Utilities	30,600	30,000	29,600	600	2.0%	1,000	3.4%
Information	1,400	1,400	1,500	0	0.0%	-100	-6.7%
Financial Activities	5,600	5,600	5,500	0	0.0%	100	1.8%
Professional and Business Services	14,200	14,200	13,800	0	0.0%	400	2.9%
Education and Health Services	23,200	23,200	23,300	0	0.0%	-100	-0.4%
Leisure and Hospitality	14,200	14,200	13,900	0	0.0%	300	2.2%
Other Services	5,400	5,500	5,500	-100	-1.8%	-100	-1.8%
Government	25,900	25,600	27,000	300	1.2%	-1,100	-4.1%

Industry Size Class

June 2011

Size Class	Employees per firm	Number of Firms	Employment in Size Class	% Total Employment
9	1000+	15	26,621	17.0%
8	500-999	31	22,840	14.6%
7	250-499	49	17,024	10.9%
6	100-249	173	26,663	17.1%
5	50-99	270	18,452	11.8%
4	20-49	614	18,828	12.0%
3	10-19	847	11,517	7.4%
2	5-9	1,204	7,978	5.1%
1	1-4	2,988	6,360	4.1%
0	0	481	0	0.0%
Total		6,672	156,283	100.0%

Annual Growth Rate for Total Nonagricultural Employment



Unemployment Information (all estimates in thousands)

	Beaumont - Port Arthur MSA				Texas (Actual)				United States (Actual)			
	C.L.F.	Emp.	Unemp.	Rate	C.L.F.	Emp.	Unemp.	Rate	C.L.F.	Emp.	Unemp.	Rate
Nov-11	189.4	169.8	19.6	10.3	12,344.7	11,423.8	920.9	7.5	153,683.0	141,070.0	12,613.0	8.2
Oct-11	190.5	170.0	20.5	10.8	12,367.0	11,378.4	988.6	8.0	154,088.0	140,987.0	13,102.0	8.5
Nov-10	188.9	168.4	20.5	10.9	12,212.3	11,207.1	1,005.2	8.2	153,698.0	139,415.0	14,282.0	9.3

Historical Unemployment Rates

